

# Welcome to Bethesda Elementary School!

We have included helpful links, dates, and steps in getting your child ready for Kindergarten. Please note that dates/format are subject to change as we get more information about school closures due to COVID-19. We look forward to having you join us at B.E. this fall!

## Key Dates for Rising Kindergarten Families:

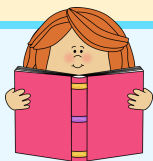
### Register by email for Kindergarten:

1. Fill out the **MCPS forms**. ([English](#), [Spanish](#), [Chinese](#), [French](#), [Korean](#), [Vietnamese](#), [Amharic](#))
2. Fill out the **B.E. Keep in Touch Form**
3. Make an electronic **copy of your documents** (proof of residency, student's proof of age, and parent ID)
4. Email forms/documents from steps 1-3 to the school's front office:  
([Maria\\_P\\_Velasco-galey@mcpsmd.org](mailto:Maria_P_Velasco-galey@mcpsmd.org), with copy to [Lisa\\_Seymour@mcpsmd.org](mailto:Lisa_Seymour@mcpsmd.org) and [Stacey\\_M\\_Lillis@mcpsmd.org](mailto:Stacey_M_Lillis@mcpsmd.org))
  - ✓ At a minimum, the B.E. Keep in Touch, MCPS 560-24, MCPS 345-17, MCPS 565-1 forms along with documents from step 3 are needed to register your child. The remainder of the forms can be submitted when your student starts school.



### Sign up for updates about the school year, play dates, and more!

- ★ Join our [school directory](#)/email list-serv. Enter your information & select "Incoming K"
- ★ Join our private parent [PTA facebook](#) group - please put incoming K for teacher info.
- ★ Check out our BE PTA website for more information ([www.bethesdaelementarypta.org](http://www.bethesdaelementarypta.org))



### Online - Kindergarten Welcome

- ★ Please [view the kindergarten welcome presentation](#) with important information about the school year.

**MID-JULY** Check the [school website](#) for the 2020-2021 B.E. Parent Handbook



**Late August (Date/Format TBD) Kindergarten Parent Info Night**

**Late August (Date/Format TBD) B.E. Open House**



**MONDAY, August 31 B.E. First Day of School**



## FAQ:

Please note, dates may change due to school closures from COVID-19. Please sign up on our school's PTA email list to get up-to-date information!

(<http://join.atozconnect.com>)

## Want to get updates and important information leading up to 2020-2021 school year?

- ★ Make sure to join our school's directory & email list at <http://join.atozconnect.com>! Fill in your family's information and select "Incoming K" as your child's grade and you will start to receive B.E. PTA emails including info on upcoming kindergarten playdates, "Back to School" information and more! You can also pay for your family's PTA membership in the Store section on AtoZconnect.
- ★ If you are an International family, once you join our directory, you can opt-in for the international subscription list.
- ★ Check out the [PTA website](http://www.bethesdaelementarypta.org) for more helpful handouts and info ([www.bethesdaelementarypta.org](http://www.bethesdaelementarypta.org))

## Helpful links:

### Registration related forms:

- ★ MCPS Required Registration Forms (7 forms):  
[www.montgomeryschoolsmd.org/info/enroll/kindergarten.aspx](http://www.montgomeryschoolsmd.org/info/enroll/kindergarten.aspx)
- ★ B.E. "Keep in Touch" Form: [tinyurl.com/BEKeepInTouchForm](http://tinyurl.com/BEKeepInTouchForm)
- ★ MCPS Proof of Age, Identity, Residency & Immunizations:  
[www.montgomeryschoolsmd.org/info/enroll/proofs.aspx](http://www.montgomeryschoolsmd.org/info/enroll/proofs.aspx)

### Information about Bethesda Elementary School:

- ★ B.E. PTA Website: [www.bethesdaelementarypta.org](http://www.bethesdaelementarypta.org)
- ★ B.E. School Website: [www.montgomeryschoolsmd.org/schools/bethesdaes/](http://www.montgomeryschoolsmd.org/schools/bethesdaes/)



## Questions?

Don't hesitate to reach out to the B.E. PTA. Email the B.E. PTA president at [bethesdaelemPTApresident@gmail.com](mailto:bethesdaelemPTApresident@gmail.com)!